



CIGRENI

CIGRENI

Ventilation appliances.

Downdraft ventilation. 86

Island hood. 88

Wall-mounted hoods. 89

Flat kitchen hood. 91

Fan units. 92

Technical specifications. 94



VL 431 107 02

Stainless steel frame
Control unit
Air extraction with remote fan unit
AR 400/401

VL 430 107 02

Stainless steel frame
Expansion element
Air extraction with remote fan unit
AR 400/401
Only in combination with VL 431

Installation accessories

AL 400 000
Terminating trim if downdraft is installed as the last appliance in a combination (no additional cut-out required)

AS 070 000
Connection piece for extension in the case of installation next to VK or VF

LS 330 000
Air baffle for combination with VL 430/431

230-240V/50Hz

**Vario downdraft ventilation 400 series
VL 431/VL 430**

- Ventilation element integrated in the worktop
- Highly efficient ventilation system at the cooktop

Output

Maximum air output in combination with remote fan units on page 94/95. Sound power level depends on the built-in situation.

Features

Output control, touch key operation.
2 output levels.
Run-on function; duration approx. 22 minutes.
Automatically continued run-on in the "0" position for approx. 15 seconds.
Automatic sealing flaps over ventilation slit.
Metal grease filter with grease collecting insert.
Duct connection piece DN 125 cylindric.

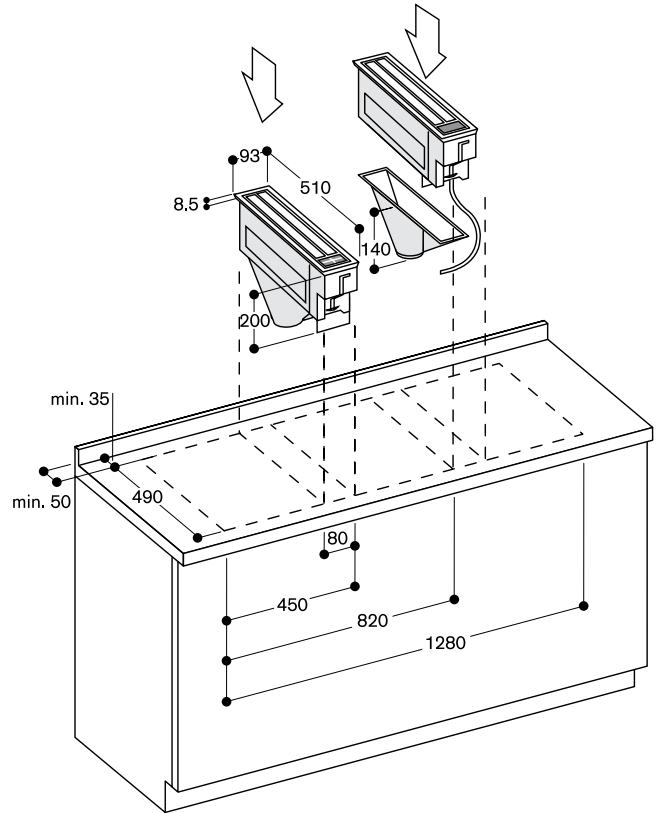
Planning notes

Air extraction operation in combination with remote fan units AR 400/401
Maximum cooktop width between two VL: 60 cm.
Maximum distance between cut-outs: 5 cm.
The air baffle LS 330 000 is mandatory for installation next to gas appliances to avoid hazard of fire by saturated grease filters.
Do not operate VL 431/430 next to VG 411 gas wok.
Store the control electronics box (250 x 145 x 54 mm) for VL 431 in the lower cabinet.
For installation in stone or light-coloured plastic worktops, use sealing tape.
The use of flat duct systems is not permitted.
Duct connection downwards or sideways:
DN 125 cylindrical included.

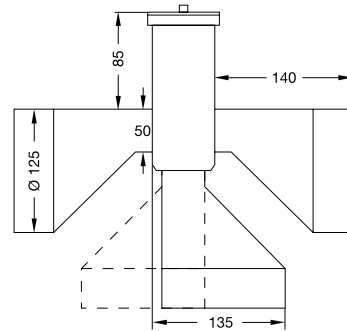
Please ensure when installing the exhaust air ducting that no sharp bends are caused and that the cross-section of the ducting is not constricted in any way.

Connection

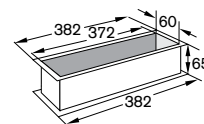
Connecting cable 1.5 m with 10 amp plug.



Circular duct pipe connection bottom/left/right using 125mm diameter. The use of flat duct systems is not permitted.



AS 070 000





Vario downdraft ventilation 200 series
VL041/VL040

- Ventilation element integrated in the worktop
- Highly efficient ventilation system at the cooktop

Output

Maximum air output in combination with remote fan units on page 94/95. Sound power level depends on the built-in situation.

Features

Output control, knob operation.
4 output levels.
Ventilation grille can be washed.
Metal grease filter with grease collecting insert.

Planning notes

No additional switch necessary.
Air extraction operation in combination with remote fan units AR 400/401. Maximum cooktop width between two VL: 60 cm.
The air baffle LS 041 000 is mandatory for installation next to gas appliances to avoid hazard of fire by saturated grease filters.
Do not fit in drawer area.
The use of flat duct systems is not permitted.
Duct connection downwards or sideways:
DN 125 cylindrical included.

Please ensure when installing the exhaust air ducting that no sharp bends are caused and that the cross-section of the ducting is not constricted in any way.

Connection

Connecting cable 1.5m with 10 amp plug.

VL 041 134

Aluminium control panel
Control unit
Air extraction with remote fan unit
AR 400/401

VL 040 134

Aluminium control panel
Expansion element
Air extraction with remote fan unit
AR 400/401
Only in combination with VL 041

Installation accessories

AS 070 000
Connection piece for extension in the case of installation next to VK or VF

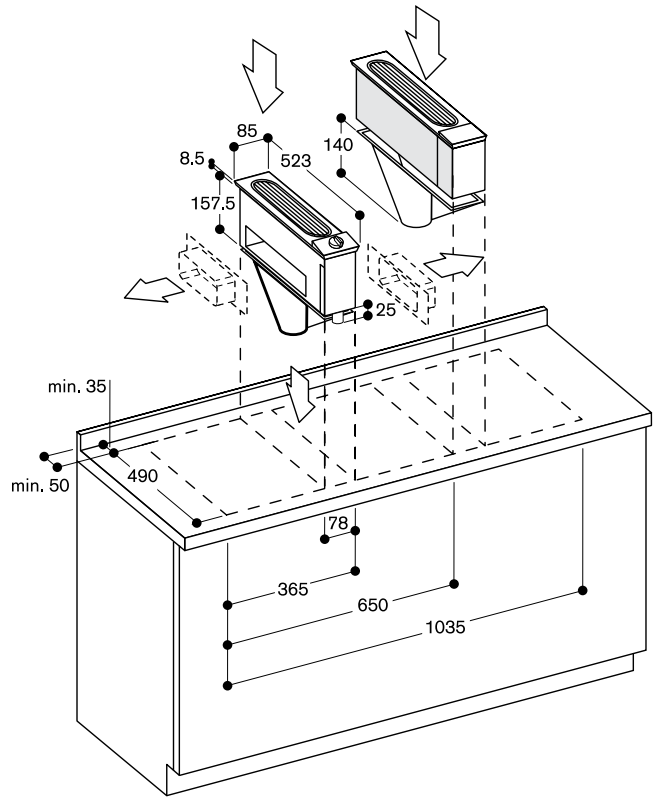
LS 041 000

Air baffle for VL 040/041 next to gas appliance

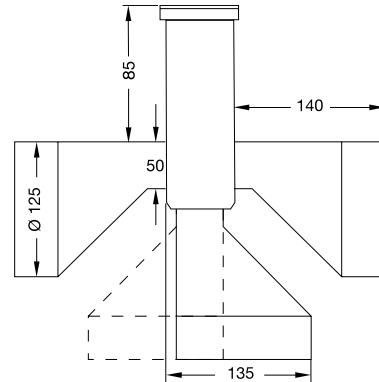
VV 200 034

Aluminium connection strip for combination with further Vario cooktops

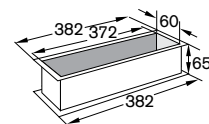
230-240V/50Hz



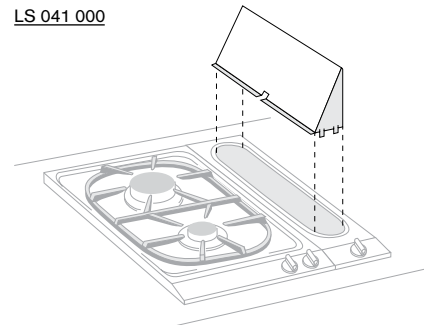
Circular duct pipe connection bottom/left/right using 125mm diameter. The use of flat duct systems is not permitted.



AS 070 000



LS 041 000





AI 281 120

Aluminium-lacquered
Width 120 cm

Air extraction/recirculation

Necessary installation accessories

AD 281 016

Exhaust air duct aluminium-lacquered,
for ceiling heights 2.27 m - 2.44 m

AD 281 026

Exhaust air duct aluminium-lacquered,
for ceiling heights 2.44 m - 2.76 m

AD 281 036

Exhaust air duct aluminium-lacquered,
for ceiling heights 2.76 m - 2.98 m

Air recirculation duct for ceiling heights including air flow in the duct (order activated charcoal filter separately)

AD 281 126

Recirculating air duct aluminium-lacquered for ceiling heights 2.44 m - 2.76 m

AD 281 136

Recirculating air duct aluminium-lacquered for ceiling heights 2.76 m - 2.98 m

Special accessory

KF 001 010

Activated charcoal filter

230-240V/50Hz

Island hood

AI 281

- Coanda effect on both sides leads to highly efficient extraction, even on lowest power level
- Air extraction or recirculation system
- Dimmable Soft-Light
- Operation from both sides

Output

Max. air output 690 m³/h with DN 150 unobstructed air flow, additionally 90 m³/h Coanda effect.

Max. air output according to DIN EN 61591:

Air extraction 640 m³/h, additionally 120 m³/h Coanda effect.

Air recirculation 260 m³/h, additionally 80 m³/h Coanda effect.

Sound pressure level with DN 150:
Air extraction 49 dB(A).

Sound power level according to DIN EN 60704 with DN 150:
Air extraction 63 dB (re 1 pW).
Air recirculation 68 dB (re 1 pW).

Features

Control panel on both sides.
3 electronically controlled output levels.
Intensive mode with ongoing Coanda effect.
Interval ventilation.
Run-on function.
Grease filter saturation indicator.
Cartridge-type filter, dishwasher-safe.
Fully illuminated surface with compact fluorescent tube 2x36W and dimmable Soft-Light.

Planning notes

A large drop in output and significantly increased noise can be expected in the air recirculation mode in the case of ventilation hoods with a very high air output.

Vario cooktops with intensive production of vapours like VR/VP/VF should be placed in the middle beneath the cooker hood (in this case air recirculation is not recommended).
Clearance above gas appliances min. 70 cm.

Clearance above electric appliances min. 60 cm.

Side outlet possible no lower than 58 cm from the bottom edge of the hood (pipe middle).

Fit the socket concealed behind ventilation duct.

Weight 41- 45 kg.

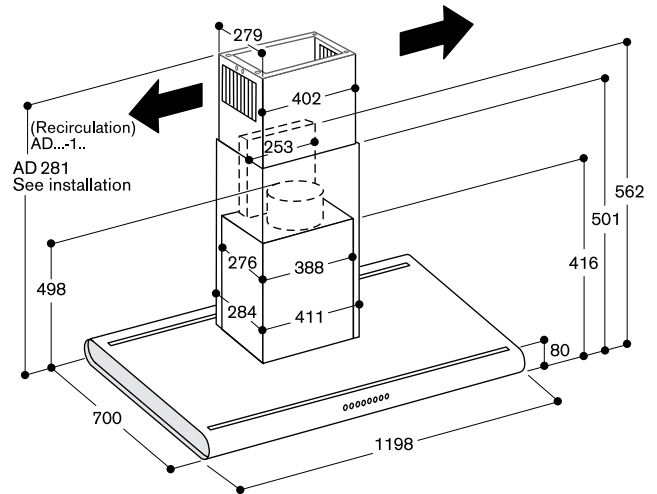
Recommendation for aluminium parts to match hood: RAL 9006 white-aluminium.

The dimensions of the air ducts refer to a distance of 1.60 m from the floor to the bottom edge of the hood.

Convert for other installation heights:
Worktop height + minimum clearance + hood with duct.

Connection

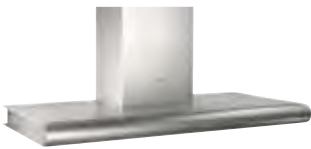
Total connected load 335 W.
Connecting cable 1.2 m with 10 amp plug.



Air extraction:
AD 281 016 = 670-840 mm
AD 281 026 = 840-1160 mm
AD 281 036 = 1160-1380 mm

Recirculation:
AD 281 126 = 840-1160 mm
AD 281 136 = 1160-1380 mm





Wall-mounted hood

AW 281

- Coanda effect leads to highly efficient extraction, even on lowest power level
- Reduced energy consumption and less noise
- Air extraction or recirculation system
- Dimmable Soft-Light

AW 281 190

Aluminium-lacquered

Width 90 cm

Air extraction/recirculation

AW 281 120

Aluminium-lacquered

Width 120 cm

Air extraction/recirculation

Necessary installation accessories

AD 281 012

Exhaust air duct aluminium-lacquered, for ceiling heights 2.25 m - 2.62 m

AD 281 022

Exhaust air duct aluminium-lacquered, for ceiling heights 2.62 m - 3.01 m

Air recirculation duct for ceiling heights including air flow in the duct (order activated charcoal filter separately)

AD 281 112

Recirculating air duct aluminium-lacquered for ceiling heights 2.36 m - 2.62 m

AD 281 122

Recirculating air duct aluminium-lacquered for ceiling heights 2.62 m - 3.01 m

Special accessories

KF 001 010

Activated charcoal filter

230-240V/50Hz

Max. air output according to

DIN EN 61591:

Air extraction 600 m³/h, additionally 80 m³/h Coanda effect.

Air recirculation 300 m³/h, additionally 100 m³/h Coanda effect.

Sound pressure level with DN 150:

Air extraction 47 dB(A).

Sound power level according to

DIN EN 60704 with DN 150:

Air extraction 61 dB (re 1 pW).

Air recirculation 70 dB (re 1 pW).

Features

3 electronically controlled output levels.

Intensive mode with ongoing Coanda effect.

Interval ventilation.

Run-on function.

Grease filter saturation indicator.

Cartridge-type filter, dishwasher-safe.

Fully illuminated surface with compact fluorescent tube 2x36 W and

dimnable Soft-Light.

Planning notes

A large drop in output and significantly increased noise can be expected in the air recirculation mode in the case of ventilation hoods with a very high air output.

Vario cooktops with intensive production of vapours like VR/VP/VF should be placed in the middle beneath the cooker hood (in this case air recirculation is not recommended).
Clearance above gas appliances min. 70 cm.

Clearance above electric appliances min. 60 cm.

Side outlet possible no lower than 58 cm from the bottom edge of the hood (pipe middle).

Fit the socket concealed behind ventilation duct.

Weight 29 – 35 kg.

Recommendation for aluminium parts to match hood: RAL 9006 white-aluminium.

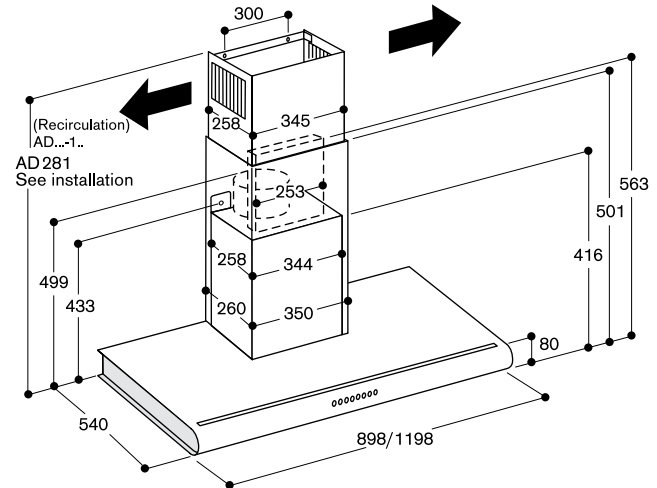
The dimensions of the air ducts refer to a distance of 1.60 m from the floor to the bottom edge of the hood.

Convert for other installation heights:
Worktop height + minimum clearance + hood with duct.

Connection

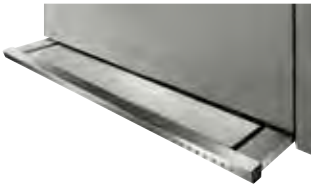
Total connected load 295 W.

Connecting cable 1.2 m with 10 amp plug.



Air extraction:
AD 281 012 = 650–1,020 mm
AD 281 022 = 1020–1410 mm

Recirculation:
AD 281 112 = 760–1020 mm
AD 281 122 = 1020–1410 mm



Flat kitchen hood
AH 900

- From the inventor of flat kitchen hoods
- Especially quiet
- Easy filter change
- Air extraction or recirculation system

AH 900 161

Stainless steel front panel
Width 60 cm
Air extraction/recirculation

AH 900 191

Stainless steel front panel
Width 90 cm
Air extraction/recirculation

Special accessories

KF 900 055

Activated charcoal air filter for retrofitting AH 900 161

KF 900 090

Activated charcoal air filter for retrofitting AH 900 191

230-240V/50Hz

Output

Max. air output 660 m³/h with DN 150 unobstructed air flow.

Max. air output according to DIN EN 61591:
Air extraction 600 m³/h.
Air recirculation 370 m³/h.

Sound pressure level with DN 150:
Air extraction 42 dB(A).

Sound power level according to DIN EN 60704 with DN 150:
Air extraction 54 dB (re 1 pW).
Air recirculation 64 dB (re 1 pW).

Features

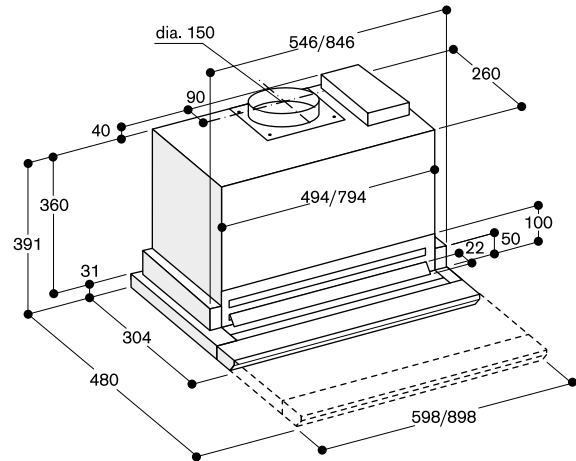
Controls at front.
3 electronically controlled output levels.
Intensive mode.
Interval ventilation.
Run-on function.
Grease filter saturation indicator.
Cartridge-type filter, dishwasher-safe.
Compact fluorescent lamp 1 x 36/2 x 24 W.
Light can be switched on separately.
Extendable steam screen 175 mm.
DN 150 or DN 125 exhaust air pipe connection.

Planning notes

Vario cooktops with intensive production of vapours like VR/VP/VF should be placed in the middle beneath the cooker hood (in this case air recirculation is not recommended).
Clearance above gas appliances min. 65 cm.
Clearance above electric appliances min. 47 cm.
To be installed in an upper cabinet without base.
Filters must be accessible.
To change the filter, the door of the cabinet must be opened completely.

Connection

Total connected load 230/240 W.
Connecting cable 1.5 m with 10 amp plug.





Remote fan unit
AR 400

- Can be combined with maximum of 4 downdrafts VL 431/430/041/040

Output

Max. air output 1000 m³/h with DN 200 unobstructed air flow.

Max. air output according to DIN EN 61591:
Air extraction NN/NN* m³/h.

Sound power level depends on the built-in situation.

Features

Metal housing, zinc-plated.
Pipe connections air intake: 1 x DN 200 cylindrical, 4 x DN 150 cylindrical.
Pipe connection pressure side: 1 x DN 200 cylindrical.
Spare cover for closing air intake.

Planning notes

If more than 2 VL ventilation units are installed with AR 400 additional connecting piece no. 653556 and UR 020 151 adaptors must be ordered separately via spare parts.

Maximum of two 90° elbows. Each bend is equivalent to 1.5m of straight duct. Do not exceed 8m total duct run. Do not use 90° bend directly on the discharge opening of the fan unit. If a 90° bend is unavoidable, we recommend a straight, 200-300 mm segment with connecting bend. However it is best to install two 45° bends.

Use rigid galvanised metal duct on discharge opening of the fan unit. Flexible duct is not recommended. If installing exhaust ducting into concrete slab, PVC pipe is recommended.

Connection

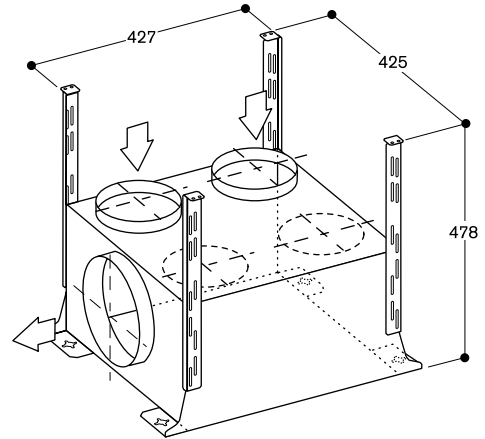
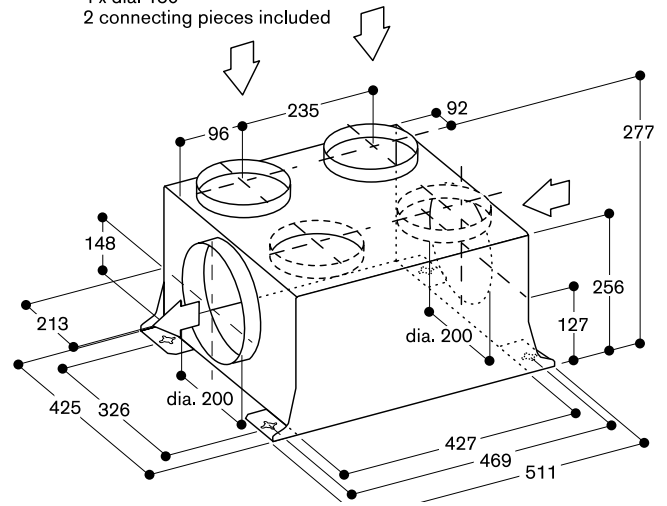
Fan output 365/520 W.
Connecting cable 1.05m.
Plug pair for individual length of connecting cable 6 x 1.5 mm².

230 - 240V/50Hz

AR 400 130
Metal housing
Max. air output 1000 m³/h
Inside installation
Air extraction

Necessary accessory if using DN 150 duct
AD 702 042
Pipe adapter from DN 200/150/125 on outlet
Duct diameter must be minimum DN 150 on outlet

4 x dia. 150
2 connecting pieces included



Special accessories

AD 700 051

Wall outlet

Stainless steel
DN 200 cylindric



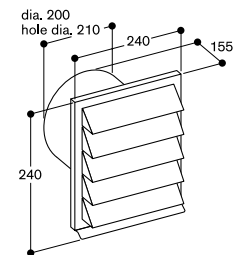
Little loss of airflow due to large stainless steel outlet louvers.

Features

Weatherproof stainless steel louvers.
Integrated one-way flap.
Connection piece DN 200 cylindrical

Planning notes

Wall breakthrough ø 210 mm



AD 750 051

Wall outlet with telescopic duct

Stainless steel/Plastic
DN 150 cylindric



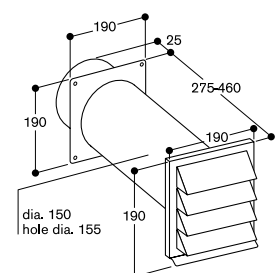
Little loss of airflow due to large stainless steel outlet louvers.

Features

Weatherproof stainless steel louvers.
Integrated one-way flap.
Telescopic wall duct 275 - 460 mm for cylindrical duct DN 150.

Planning notes

Wall breakthrough ø 155 mm.





AR 401 130

Stainless steel
 Max. air output 950 m³/h
 Outside wall mounting
 Air extraction

Included installation accessory

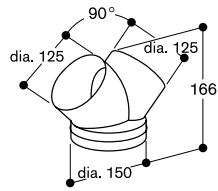
AD 702 042

Pipe adapter from DN 200/150/125 on outlet

Installation accessory

AD 754 044

Required to connect pair of VL 431/430 or VL 041/040 DN150/125



AD 754 044

Remote fan unit

AR 401

- Outside installation allows lower noise level in the kitchen
- Can be combined with maximum 2 downdrafts VL 431/430/041/040

Output

Max. air output 950 m³/h with DN 200 unobstructed air flow.

Max. air output according to

DIN EN 61591:

Air extraction NN/NN* m³/h.

Sound power level depends on the

built-in situation.

Features

Complete stainless steel housing.

Pipe connections air intake:

1 x DN 200 cylindrical.

Planning notes

Maximum of two 90° elbows. Each bend is equivalent to 1.5m of straight duct. Do not exceed 8m total duct run. However it is best to install two 45° bends.

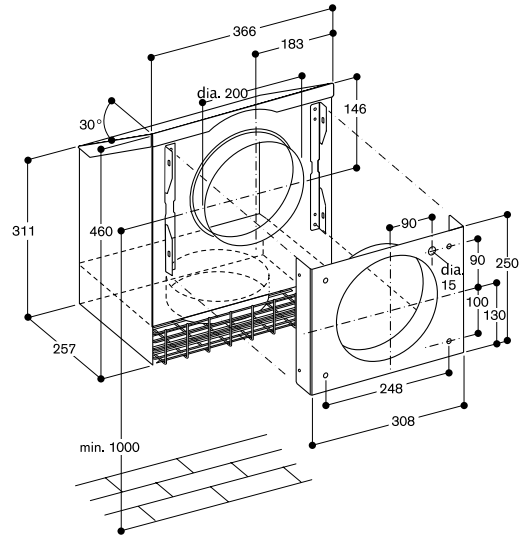
Connection

Fan output 365 W.

Connecting cable 1.05 m.

Plug pair for individual length of connecting cable 6 x 1.5 mm².

230 - 240V/50Hz





Appliance type	Downdraft	Downdraft	Downdraft
Series	400 series	400 series	200 series
	Control unit	Extension element for VL 431 107	Control unit
Stainless steel	VL 431 107	VL 430 107	
Aluminium			VL 041 134
Air extraction	•	•	•
Dimensions			
Width on worktop	(cm) 9.3	9.3	8.5
Width in lower cabinet	(cm) 7.8	7.8	7.8
Depth	(cm) 51	51	51
Height in lower cabinet / ceiling	(cm) 29.5	29.5	29.5
Net weight	(kg) 4	4	4
Air extraction performance (DIN EN 61591) with fan units, min / max / Int			
	VL 431 solo	VL 431 + VL 430	VL 041 solo
Exhaust air with AR 400 130 for inside installation, outlet DN 200	(m ³ /h) 360/570/-	460/790/-	230/570/-
Exhaust air with AR 401 130 for outside installation	(m ³ /h) 300/490/-	390/690/-	200/490/-
Features			
Sealing flaps	•	•	
Metal grease filter	Stainless steel	Stainless steel	Stainless steel
Grease drain channel	•	•	•
Fan levels	(No.) 2		4
Run-on function	•	•	
Control panel arrangement	Keys on top		Knob on top
Function indicators / display	•/-		-/-
Exhaust air connection bottom/side	•/•/-	•/•/-	•/•/-
Exhaust air connection piece DN 125 cylindrical duct	•	•	•
Connecting cable length	(m) 1.5	1.0	1.5
Connection			
Total connected load	(W) depending on fan unit	depending on fan unit	depending on fan unit
Radio frequency interference-suppressed	•	•	•

• Standard. – Not available.



Downdraft

200 series

Extension element for VL 041

VL 040 134

•

8.5

7.8

51

29.5

4

VL 041 + VL 040

310/790/-

260/690/-

Stainless steel

•

•/•/-

•

1.0

depending on fan unit

•

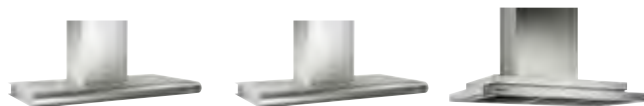


Appliance type	Island hood	
Aluminium-lacquered	Al 281 120	
Air extraction / recirculation	•/•	
Dimensions with ventilation duct		
Width	(cm)	120
Depth	(cm)	70
Height, air extraction / recirculation, min. – max.	(cm)	67 – 138/84 – 138
Net weight, min. – max.	(kg)	41 – 45
Air extraction duct weight, min. – max.	(kg)	8 – 14
Air extraction performance (EN 61591), min / max / Int		
Air extraction	(m ³ /h)	280/470/640 ³
Air extraction Coanda effect	(m ³ /h)	45/115/120
Air recirculation	(m ³ /h)	160/240/260 ¹
Air extraction Coanda effect	(m ³ /h)	65/70/80
Max. back pressure at 0 m ³ /h	(Pa)	500
Sound power level (EN 60704-3) max / Int		
Extraction mode	(dB(A) re 1 pW)	63 ³ /71
Recirculation mode	(dB(A) re 1 pW)	68 ³
Sound pressure level (EN 60704-2-13) max		
Extraction mode	(dB (A) re 20 µPa)	49
Features		
Coanda effect	•	
Stainless steel grease filter	•	
Fan output levels	(No.)	3
Intensive mode	•	
Run-on function	•	
Interval ventilation	•	
Grease filter saturation indicator	•	
Function indicators	2	
Compact fluorescent tube lighting	2 x 36	
Illuminance	(lx)	913
Soft-Light	•	
Exhaust air connection piece	(ø mm)	150
Fans	(No.)	1
Fan output	(W)	260
Connecting cable length	(m)	1.2
Minimum clearance above cooking area		
For gas appliances	(cm)	70
For electric appliances	(cm)	60
Connection		
Total connected load	(W)	335
Radio frequency interference-suppressed	•	

• Standard. – Not available.

¹ If the air output is high during the air circulation mode, a considerable drop in output and clearly increased noise in comparison with air extraction is to be expected.

² Special accessory. ³ The Coanda effect allows for operation at lower output levels.

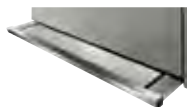


Appliance type	Wall hood	Wall hood	Wall hood
Aluminium-lacquered	AW 281 120	AW 281 190	AW 201 192
Air extraction / recirculation	•/•	•/•	•/•
Dimensions with ventilation duct			
Width	(cm) 120	90	90
Depth	(cm) 54	54	56
Height, air extraction / recirculation, min. – max.	(cm) 65 – 141/76 – 141	65 – 141/76 – 141	65 – 142/76 – 142
Net weight, min. – max.	(kg) 33 – 35	29 – 31	21 – 28
Air extraction duct weight, min. – max.	(kg) 7 – 11	7 – 11	7 – 11
Air extraction performance (EN 61591), min / max / Int			
Air extraction	(m ³ /h) 270/450/610 ²	270/440/600 ²	250/450/650
Air extraction Coanda effect	(m ³ /h) 50/80/80	50/80/80	
Air recirculation	(m ³ /h) 170/250/300	170/250/300	190/340/430
Air extraction Coanda effect	(m ³ /h) 70/100/100	70/100/100	
Max. back pressure at 0 m ³ /h	(Pa) 410	405	380
Sound power level (EN 60704-3) max / Int			
Extraction mode	(dB(A) re 1 pW) 61/69	61/69	57/65
Recirculation mode	(dB(A) re 1 pW) 70/72	70/72	66/71
Sound pressure level (EN 60704-2-13) max			
Extraction mode	(dB (A) re 20 µPa) 47	47	43
Features			
Coanda effect	•	•	
Stainless steel grease filter	•	•	•
Fan output levels	(No.) 3	3	3
Intensive mode	•	•	•
Run-on function	•	•	•
Interval ventilation	•	•	•
Grease filter saturation indicator	•	•	•
Function indicators	•	•	•
Halogen lighting	(W) 3		3 x 20
Compact fluorescent tube lighting	2 x 36	2 x 36	
Illuminance	(lx) 962	1276	400
Soft-Light			•
Exhaust air connection piece	(ø mm) 150	150	150
Fans	(No.) 1	1	1/0
Fan output	(W) 215	215	160
Connecting cable length	(m) 1.2	1.2	1.3
Minimum clearance above cooking area			
For gas appliances	(cm) 70	70	65
For electric appliances	(cm) 60	60	60
Connection			
Total connected load	(W) 295	295	220
Radio frequency interference-suppressed	•	•	•

• Standard. – Not available.

¹ If the air output is high during the air circulation mode, a considerable drop in output and clearly increased noise in comparison with air extraction is to be expected.

² The Coanda effect allows for operation at lower output levels.



Appliance type	Flat kitchen hood
Stainless steel-coloured	AH 900 191/161
Air extraction / recirculation	•/•
Dimensions	
Width	(cm) 90; 60
Depth	(cm) 30
Depth when steam screen extended	(cm) 48
Height	(cm) 43
Net weight	(kg) 20; 16
Air extraction performance (EN 61591), min / max / Int	
Air extraction	(m ³ /h) 290/440/600
Air recirculation	(m ³ /h) 160/280/370
Max. back pressure at 0 m ³ /h	(Pa) 460
Sound power level (EN 60704-3) max	
Extraction mode	(dB(A) re 1 pW) 54
Recirculation mode	(dB(A) re 1 pW) 64
Sound pressure level (EN 60704-2-13) max	
Extraction mode	(dB (A) re 20 µPa) 42
Features	
Glass screen	•
Metal grease filter type	Drawer
Fan output levels	(Anzahl) 3
Intensive mode	•
Run-on function	•
Interval ventilation	•
Grease filter saturation indicator	•
Arrangement of controls	Buttons at front
Function indicators / display	•/-
Halogen lighting	(W)
Compact fluorescent tube lighting	(W) 2 x 24; 36
Illuminance	(lx) 650; 680
Soft-Light	
Exhaust air connection piece	(ø mm) 150
Fans	(Anzahl) 1
Fan output	(W) 190
Connecting cable length	(m) 1.5
Minimum clearance above cooking area	
For gas appliances	(cm) 65
For electric appliances	(cm) 47
Connection	
Total connected load	(W) 240; 230
Radio frequency interference-suppressed	•

• Standard. – Not available.



Version	Outside wall	Inside
Stainless steel	AR 401 130	
Metal zinc plated		AR 400 130
Air extraction	•	•
Installation possibility		
Outside wall	•	
Inside wall		•
Bottom cupboard		•
Cellar		•
Dimensions		
Width	(cm) 366	511
Depth	(cm) 257	425
Height	(cm) 460	256
Net weight	(kg) 13	13
Air extraction performance (EN 61591), Levels 1 / 2 / 3 / 4³		
Air extraction	(m ³ /h) 310/470/690/870	350/520/730/930
Features		
Exhaust air intake connection piece	(ø mm) 200	200/4 x 150
Exhaust air outlet connection piece	(ø mm) –	200
Fans	(No.) 1	1
Fan output	(W) 365	365
Connecting cable length	(m) 1	1
Ratings in combination with extraction element		
Radio frequency interference-suppressed	•	•

• Standard. – Not available.

¹ Special accessory.

² Depending on ventilation appliance levels are used 1-4, 2+4 or as 1/2/3/Intensive.