

**Microwave oven 200 Series**

Coloured front behind glass

Grill

For upper cabinet or a tall unit

**BM 220-130**

Right-hinged

Aluminium-coloured front behind full glass door

**BM 221-130**

Left-hinged

Aluminium-coloured front behind full glass door

**Accessories included in the price:**

One universal glass pan.

One wire rack.

230-240 V / 50Hz

**BM 220/221-130**

- Aluminium-coloured front behind full glass door.

- Fits above oven with built-in frame.

Perfect for combination with BO 220.

- Multiple programmes plus memory function.

Net volume 21 litres.

**Interior dimensions:**

W 220 x H 350 x D 270 mm.

**Appliance dimensions:**

W 560 x H 382 x D 319 mm.

LCD function display with digital clock.

Operation with rotary knobs, sensor as well as direct access keys.

Adjustable cooking time up to 99 minutes.

Innowave.

**5 output levels:**

900, 600, 360, 180, 90 W.

Quartz grill 1300 W on 3 output levels.

Roasting in combination with microwave

on 3 output levels (90, 180, 360 W).

Up to 3 microwave output levels programmable in succession.

Memory function.

10 cook-by-weight settings:

3 thawing programmes,

4 cooking programmes,

3 combination programmes.

Stainless steel cooking compartment

with ceramic flooring.

25-W interior light.

Side-opening door with panoramic window opens up to 90° angle.

Triple door lock.

**Installation accessories:**

**BA 266-230 Built-in frame**

aluminium for right-hinged. Required for use in upper cabinet.

**BA 266-231 Built-in frame**

aluminium for left-hinged. Required for use in upper cabinet.

**Planning notes:**

**Door hinge not reversible.**

Minimum installation height 85 cm.

Height adjustable.

Plan an intermediate floor of at least 19 mm.

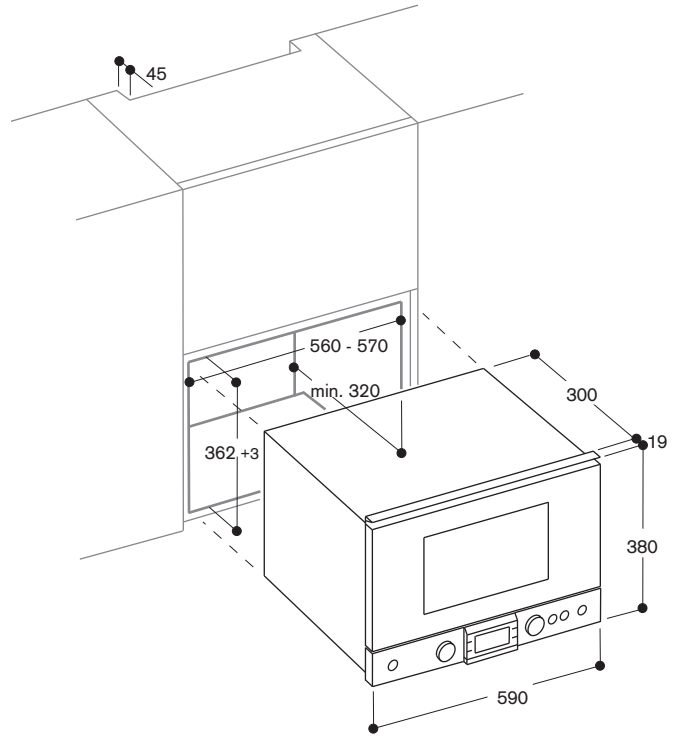
A ventilation cut-out must be made in the floor of the cabinet minimum dimensions of 45mm x 500mm. Do not cover ventilation slots or air intake points.

**Rating:**

Total connected load 1.99 kW.

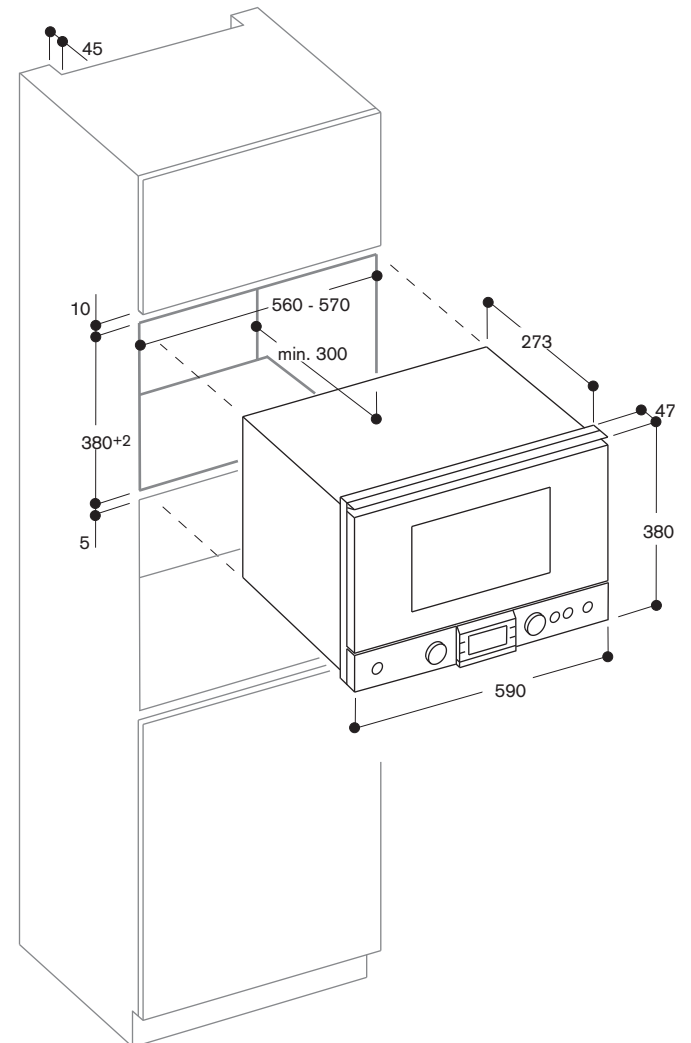
The appliances comes with a connection cable (1.50 m) and 10 amp plug.

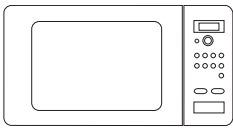
**Built-in in upper cabinet**



**Built-in in a tall unit**

Built-in measurements in combination with BA 266-2...





Microwave with grill  
For upper cabinet

**BM 211-100**

Left-hinged

Black

Accessories included in the price:

One universal metal pan.

One wire rack.

230-240 V / 50Hz

**BM 211-100**

- For integration into the housing with lift door **BF 263**. Matching the 200 Series.

- Microwave power of up to 1000 W, quartz grill with three output levels up to 1300 W. High output in a compact form.

- Various programmes, cook-by-weight-settings, memory function.

Capacity cooking compartment:  
27 litres.

Oven interior dimensions:  
W 360 x H 215 x D 350 mm.

Appliance dimensions:  
W 510 x H 310 x D 390 mm.

Digital function display.  
Easy operation electronics with direct access keys and concealed knob.  
Adjustable cooking time up to 99 minutes.

Innowave.

**5 output levels:**

1000, 600, 360, 180, 90 W.

Quartz grill 1300 W with  
3 output levels.

Roasting in combination with microwave in 4 output levels (90, 180, 360, 600 W).

Up to 3 microwave output levels programmable in succession.

Memory function.

10 automatic programmes with cook-by-weight settings:

3 thawing programmes,  
4 cooking programmes,  
3 combination programmes.

Stainless steel cooking compartment.

34 cm glass rotating plate.

25-W interior light.

Side-opening door with panoramic window, left-hinged.

Triple door lock.

**Installation accessories:**

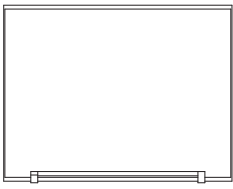
**BF 263-030** Housing with lift door, matching the 200 Series.

**Planning note:**

**Door hinge not reversible.**  
Minimum installation height 85 cm.

**Rating:**

Total connected load 2.62 kW.  
The appliance comes with a connection cable (1.20 m) and 10 amp plug.



**BF 263-030**

- Full glass door, aluminium backed. Matching the 200 Series.
- Lift function with gas pressurized springs. A slight lifting is enough for the door to automatically open to the top.
- Housing with door. Interior can also be used as storage space.

Housing with lift door for BM 211-100 microwave  
Matching the BO/BS 200 Series  
Width 60 cm

Interior dimensions:  
W 518 x H 444 x D 509 mm.

Stainless steel interior, powder-coated, back open.

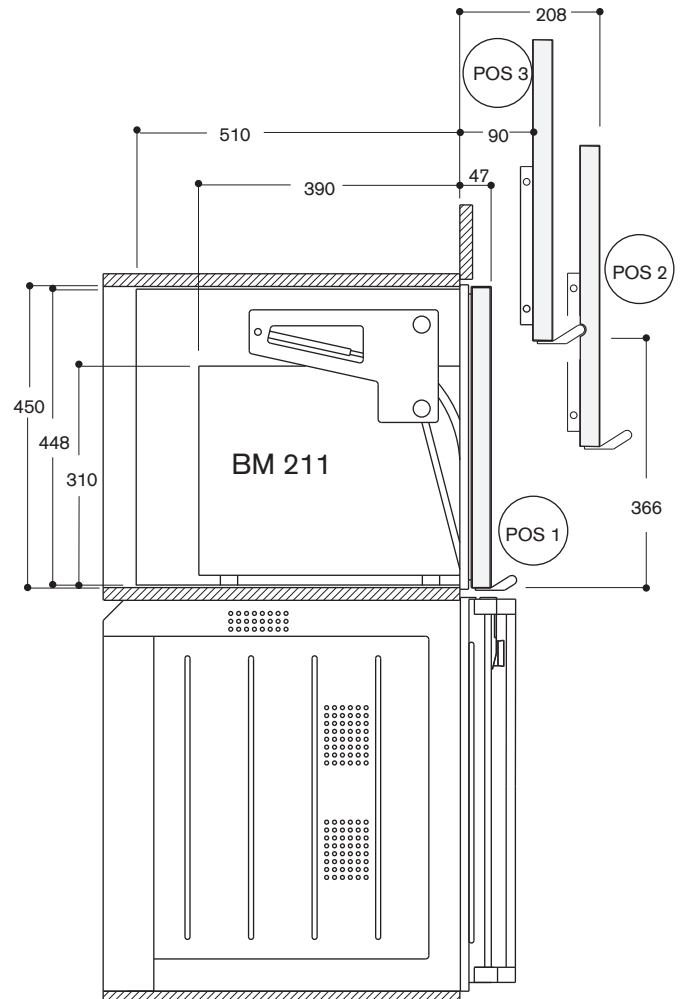
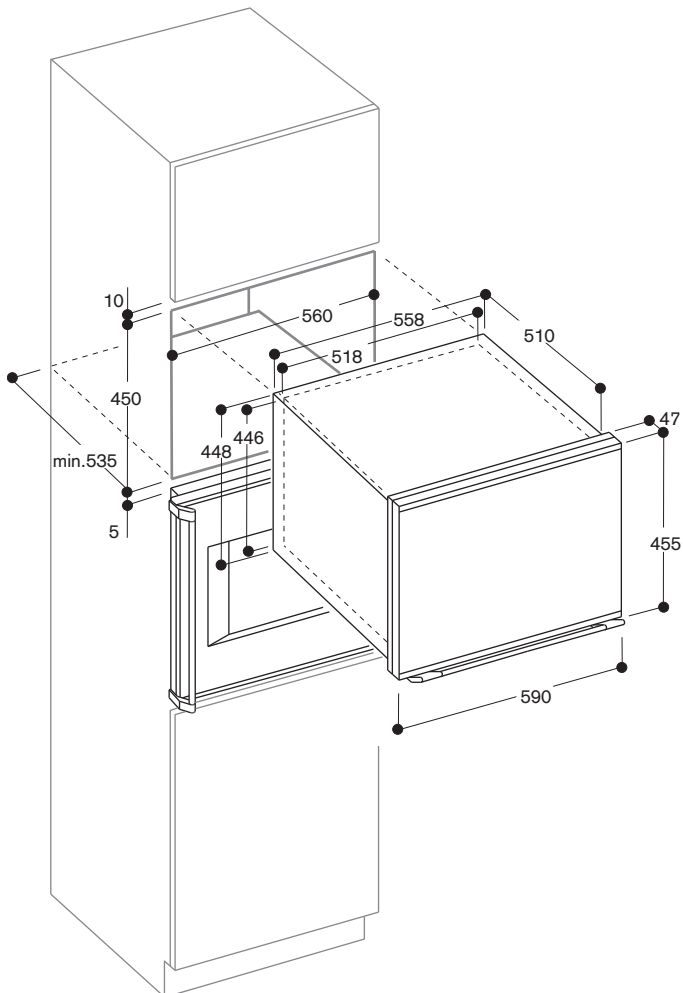
Gas pressurized springs for easy and smooth handling.  
Door mechanics are covered by interior lining.

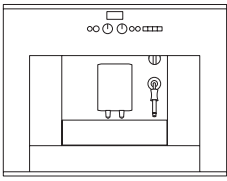
**BF 263-030**  
Aluminium-backed full glass door

**Planning note:**

Can be combined with BM 211-100 microwave.  
Plan intermediate shelf of at least 19 mm.

A ventilation cut-out must be made in the floor of the cabinet minimum dimensions of 45mm x 500mm if installing microwave BM 211-100.





**Built-in fully automatic coffee machine, Series 200**  
Width 60 cm

**CM 210-130**  
**Aluminium frontage**

Accessories included in the price:  
1 water filter cartridge  
2 cleaning tabs,  
2 descaling tabs,  
measuring spoon for additional coffee type, water filter cartridge for water tank.

**CM 210-130**

- Elegantly integrated into the cabinet, perfectly combined. High-tech in aluminium.
- Aroma Whirl brewing technique for full aroma. Single portion cleaning for 100% hygiene.
- Immediate coffee brewing after foaming.

Aroma Whirl brewing technique.  
Single portion cleaning.

15 bar thermo block-pump pressure system.  
Steam and hot water function.  
Immediate coffee brewing after foaming milk.  
High-end conical grinding gear of hardened steel.  
6 individual grinding level settings.

Adjustable brewing chamber (7 to 14 g).  
6 levels of ground coffee portioning (smooth to super strong).  
Serves 1 or 2 cups with selection of 12 water levels.  
Height adjustable coffee spouts.

Display (8 languages).  
4 different water hardness settings.  
3 different coffee temperature settings.  
Electronic fill level control for coffee beans and water.  
Electronic fill level control for drip and coffee dregs tray.  
Programmable turn-on time and standby-function.

Removable water tank for 1.8 l.  
Bean container with aroma preservation lid for up to 400 g.  
Separate container for second ground coffee type.  
Fully automatic rinse programme at turn-on and turn-off.  
Automatic cleaning/descaling programme.  
Indicator light.

**Special accessories:**  
(order as spare parts)  
Part No. 461732 Water filter cartridge  
Part No. 316817 Descaling agent  
Part No. 310575 Cleaning tablets

**Planning note:**

**Ideal installation height 950 mm or higher.**  
The façade of the appliance extends 47 mm from the cabinet cavity. The cabinet must not have a rear panel behind the appliance. Plan a venting gap of at least 200 cm<sup>2</sup>. Venting gaps and air intake must not be blocked.

Mount directly above WS 261 in standard 59-cm cabinet.

**Rating:**

Total connected load 1.3 kW.  
Cable (3 m) with 10 amp plug.

